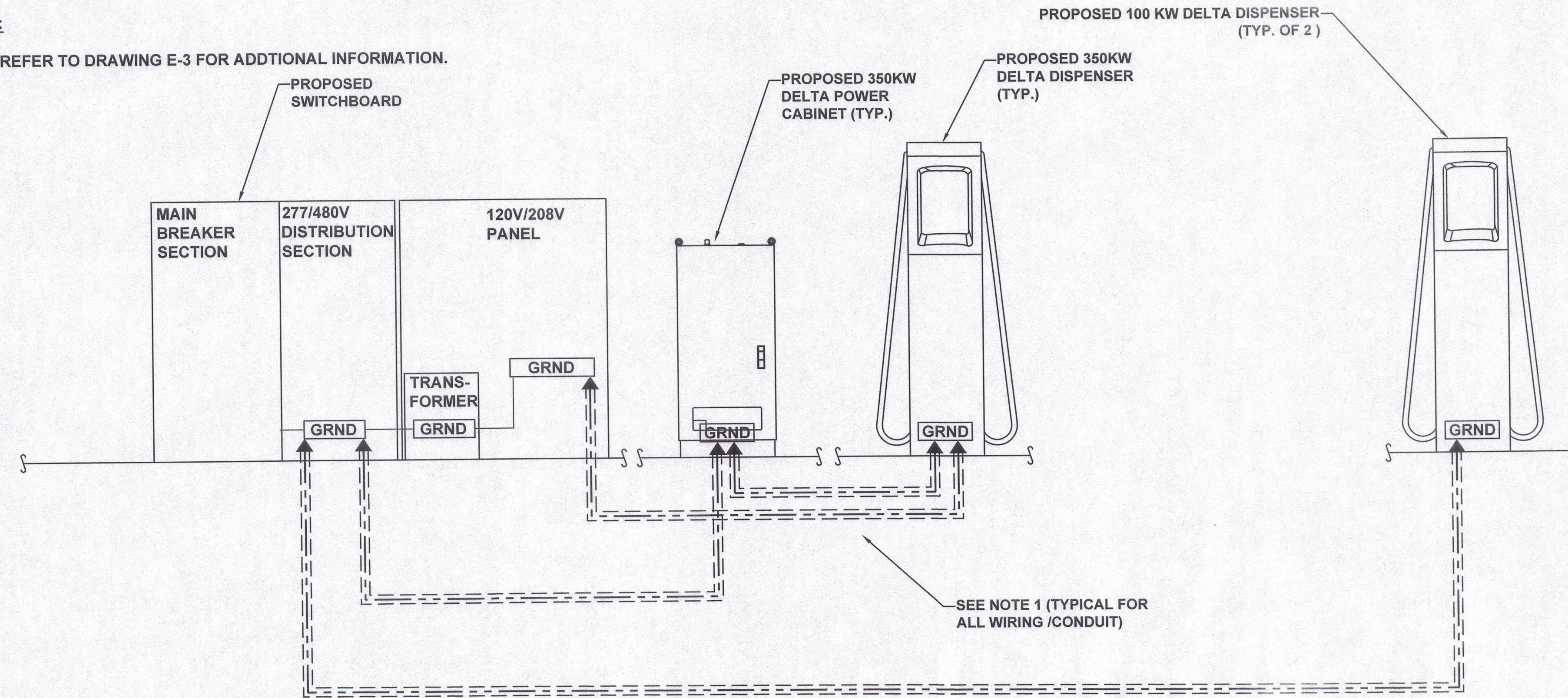
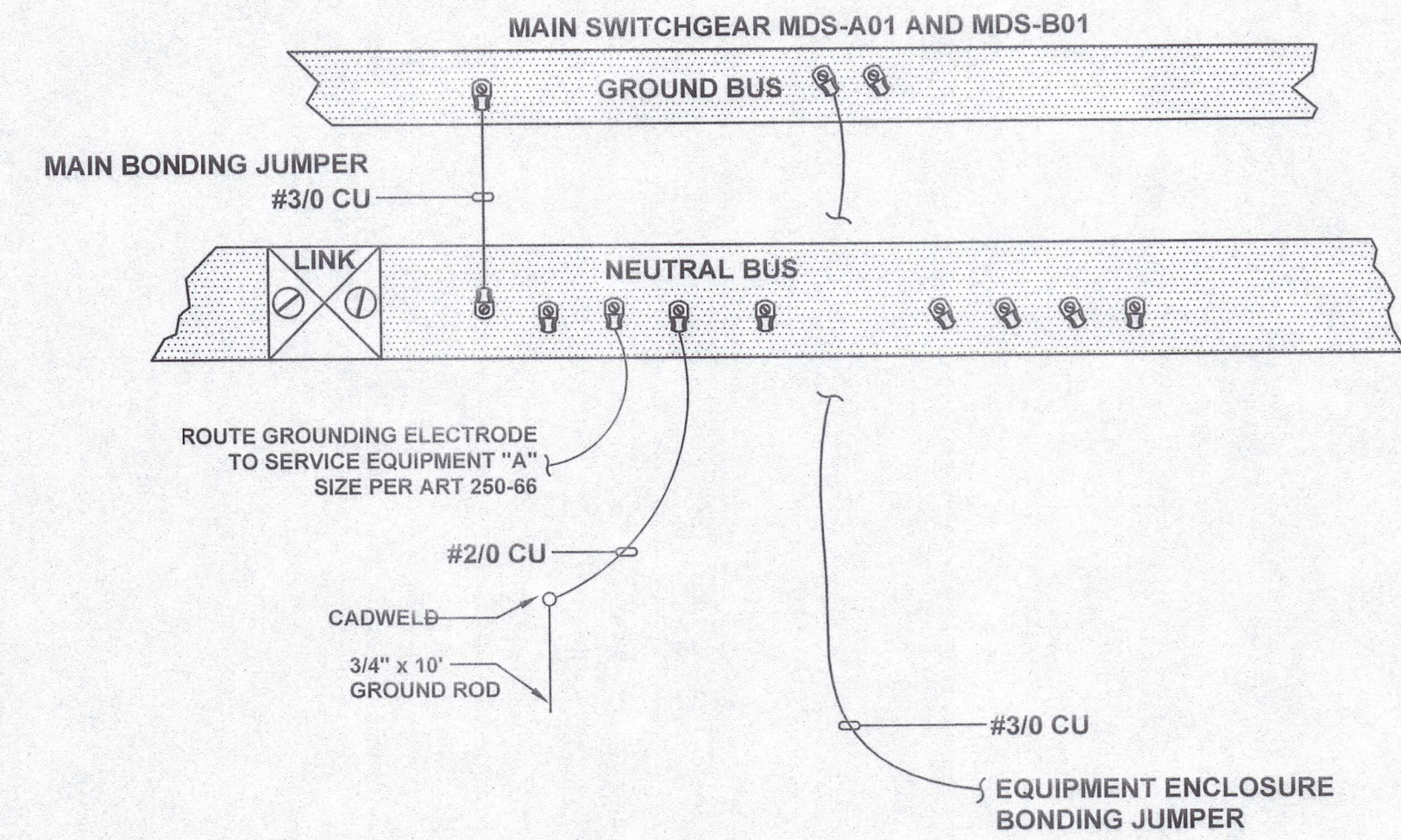


NOTE:

- REFER TO DRAWING E-3 FOR ADDITIONAL INFORMATION.



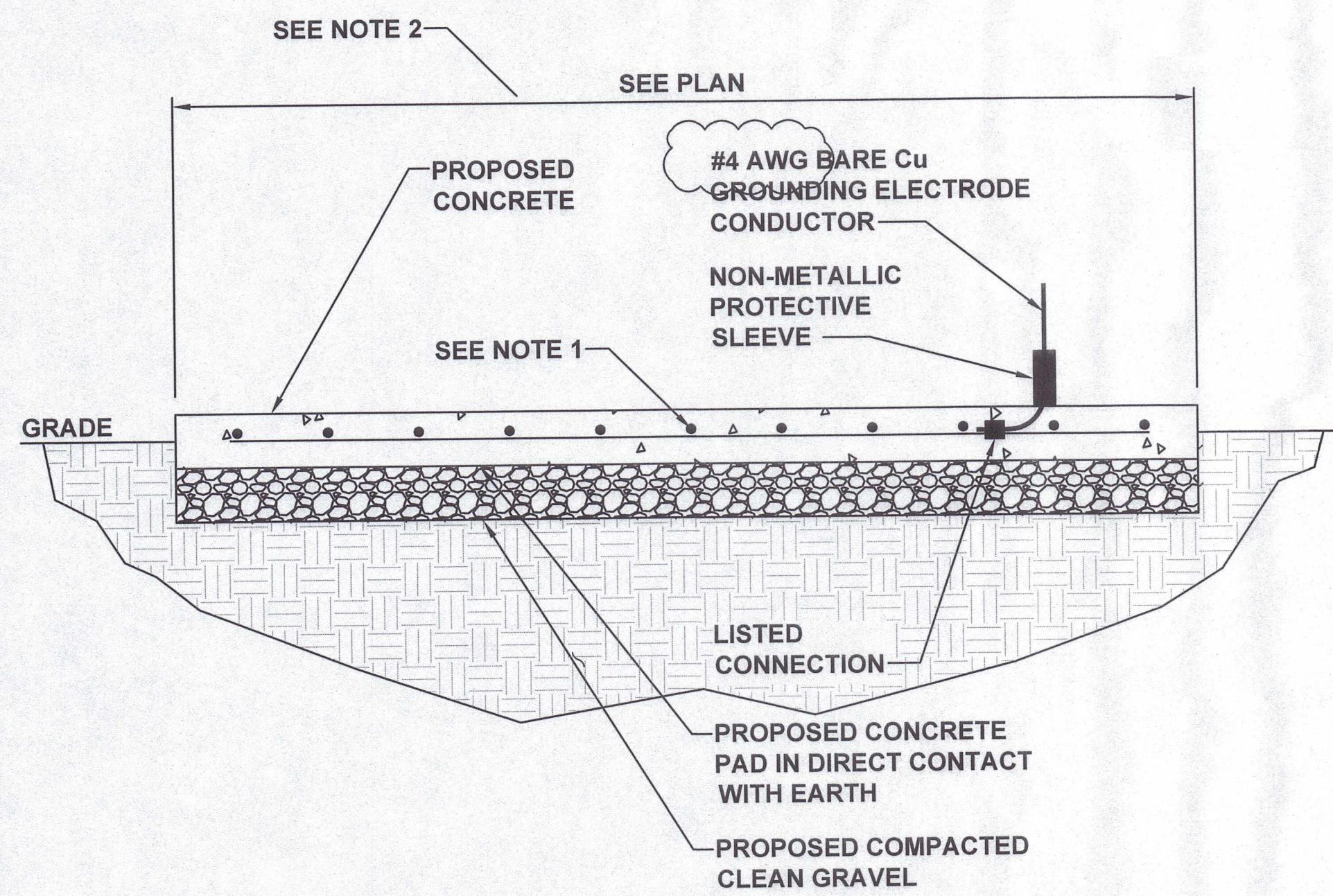
A SCHEMATIC GROUNDING DETAIL
SCALE: N.T.S.



E SERVICE GROUNDING & BONDING DETAIL
SCALE: N.T.S.

NOTE

- REBAR BONDED TOGETHER WITH STEEL TIE WIRES OR EXOTHERMIC WELDING
- COORDINATE EXACT PAD DETAILS REQUIREMENTS WITH ACE FOR PMT AND WITH SWITCHBOARD MANUFACTURER FOR SWITCHBOARD AS REQUIRED.



B CONCRETE ENCASED ELECTRODE DETAIL
SCALE: N.T.S.

CADWELDED CONNECTIONS
OR ENGINEER APPROVED EQUAL

<p>CABLE TO REBAR TEE CONNECTION HORIZONTAL CABLE TAP TO VERTICAL REBAR</p> <p>TYPE RJ</p>	<p>HORIZONTAL SPLICE SPLICE OF HORIZONTAL CABLES</p> <p>TYPE SS</p>	<p>PARALLEL HORIZONTAL CONDUCTORS PARALLEL THROUGH CONNECTION OF HORIZONTAL CABLES</p> <p>TYPE PT</p>
<p>BURNDY CONNECTIONS OR ENGINEER APPROVED EQUAL</p>	<p>HORIZONTAL STEEL SURFACE TO FLAT STEEL SURFACE OR HORIZONTAL PIPE</p> <p>TYPE HS</p>	<p>PARALLEL HORIZONTAL CONDUCTORS PARALLEL DEAD END TAP OR HORIZONTAL THRU CONDUCTOR</p> <p>TYPE PC</p>
<p>BOND JUMPER FIELD FABRICATED GREEN STRANDED INSULATED</p> <p>TYPE 2-YA-2</p>	<p>VERTICAL PIPE CABLE DOWN AT 45° TO RANGE OF VERTICAL PIPES</p> <p>TYPE VS</p>	<p>VERTICAL STEEL SURFACE CABLE DOWN AT 45° TO VERTICAL STEEL SURFACE INCLUDING PIPE</p> <p>TYPE VS</p>
<p>COPPER LUGS TWO HOLE - LONG BARREL LENGTH</p> <p>TYPE YA-2</p>	<p>HORIZONTAL TEE TEE OF HORIZONTAL RUN AND TAP CABLES</p> <p>TYPE TA</p>	<p>THROUGH CABLE TO GROUND ROD THROUGH CABLE TO TOP OF GROUND ROD</p> <p>TYPE GT</p>

C CADWELDED CONNECTION DETAIL
SCALE: N.T.S.

NOTES:

- ALL HARDWARE SHALL BE STAINLESS STEEL 3/8" DIAMETER OR LARGER. ALL HARDWARE 18-8 STAINLESS STEEL INCLUDING LOCK WASHERS, COAT ALL SURFACES WITH AN ANTI-OXIDANT COMPOUND BEFORE MATING.
- FOR GROUND BOND TO STEEL ONLY: INSERT A CADMIUM FLAT WASHER BETWEEN LUG AND STEEL, COAT ALL SURFACES WITH AN ANTI-OXIDANT COMPOUND BEFORE MATING.
- 2014 NEC 250.121 EXCEPTION: A WIRE-TYPE EQUIPMENT GROUNDING CONDUCTOR INSTALLED IN COMPLIANCE WITH 250.6(A) AND THE APPLICABLE REQUIREMENTS FOR BOTH THE EQUIPMENT GROUNDING CONDUCTOR AND THE GROUNDING ELECTRODE CONDUCTOR IN PARTS II, III, AND VI OF THIS ARTICLE SHALL BE PERMITTED TO SERVE AS BOTH AN EQUIPMENT GROUNDING CONDUCTOR AND A GROUNDING ELECTRODE CONDUCTOR.

D GROUNDING NOTES
SCALE: N.T.S.

