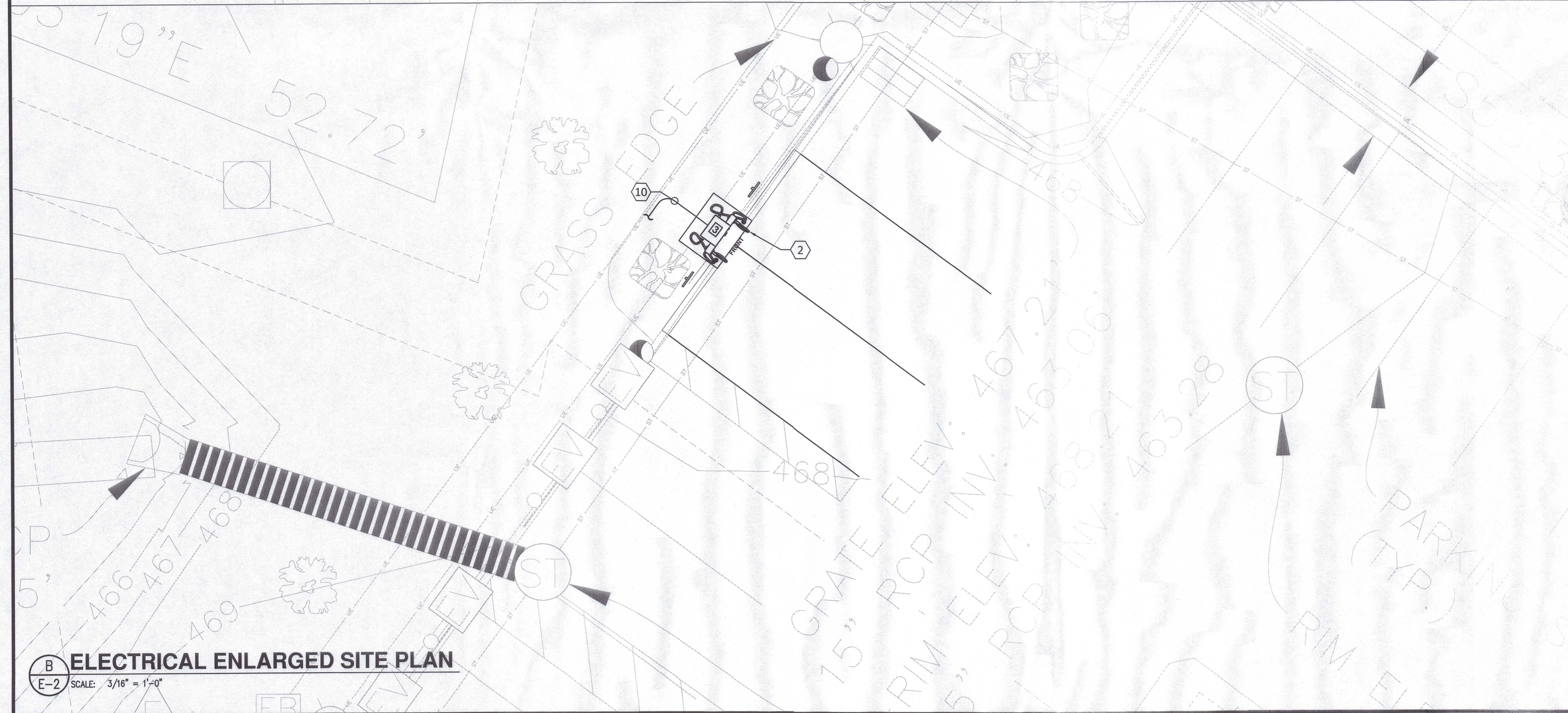


A ELECTRICAL ENLARGED SITE PLAN
 E-2 SCALE: 3/16" = 1'-0"



B ELECTRICAL ENLARGED SITE PLAN
 E-2 SCALE: 3/16" = 1'-0"

DISPENSERS TABLE

PROPOSED DISPENSERS			
CHARGE POST NO.	100 KW	350 KW	CABLE TYPE
1	1	-	CHAdEMO / CCS
2	1	-	CHAdEMO / CCS
3	-	1	CCS / CCS
-	-	-	-

DISPENSER & POWER CABINET LENGTH

DISP. & POWER CABINET COMBO NO.	EST. LINEAR LENGTH SWBD TO DISP. & POWER CABINET	POWER CABINET NO.	EST. LINEAR LENGTH SWBD TO POWER CABINET	**EST. LENGTH (FT)
1	12			28
2	16			32
		3	5	21
TOTAL ESTIMATED LENGTH				81
TOTAL ESTIMATED LENGTH OF WIRE				324

TOTAL LENGTH OF AC WIRE = SUM OF ESTIMATED LENGTH X 4 WIRES PER POWER UNIT

TOTAL LENGTH GROUND WIRE = SUM OF ESTIMATED LENGTH

DC CHARGING POST LENGTH

POWER CABINET	DISPENSER	EST. LINEAR LENGTH (FT)	**EST. LENGTH (FT)
3	3	115	137

NOTES

- (SEE SHEET E-3 FOR WIRE CONFIGURATION)
- ** AC CONDUCTOR: 16 FEET IS ADDED TO HORIZONTAL RUN LENGTH TO ACCOUNT FOR BURIED DEPTH
 - *** DC CONDUCTORS: 22 FEET IS ADDED TO HORIZONTAL RUN LENGTH TO ACCOUNT FOR BURIED DEPTH
1. CONDUIT ROUTING IS DIAGRAMMATICALLY SHOWN ON PLANS AND ARE ONLY APPROXIMATIONS. THE EXACT LOCATION AND ROUTING PATHS SHALL BE FIELD VERIFIED AND INSTALLED PER JURISDICTIONAL REQUIREMENTS.
 2. ALL ELECTRICAL WORK AND RELATED ACTIVITIES PERFORMED ONSITE SHALL BE DONE IN ACCORDANCE WITH NATIONAL ELECTRICAL CODE (NEC) STANDARDS BEING ENFORCED BY ALL APPLICABLE JURISDICTIONAL REQUIREMENTS AT TIME OF CONSTRUCTION.
 3. UTILITY EQUIPMENT INSTALLATIONS AND PREP WORK SHALL BE COORDINATED WITH THE APPROPRIATE UTILITY ENGINEER TO ENSURE ACCURACY OF INSTALLATIONS.

KEY NOTES #

1. PROPOSED LOCATION OF NEW CONCRETE PAD.
2. PROPOSED DISPENSER (OFCI).
3. PROPOSED LOCATION FOR UTILITY TRANSFORMER.
4. PROPOSED LOCATION OF UTILITY METER (IF METER SOCKET NOT BUILT-IN SWITCHBOARD). COORDINATE FINAL LOCATION, SPEC AND OTHER REQUIREMENTS WITH UTILITY COMPANY PRIOR INSTALLATION OF METER.
5. NOT USED.
6. PROPOSED 120/208V, 3PH, 4W PANEL & 480V-120/208V 3PH TRANSFORMER COMBO (OFCI).
7. PROPOSED POWER CABINET (OFCI).
8. NOT USED.
9. PROPOSED SWITCHGEAR ASSEMBLY (OWNER FURNISHED- CONTRACTOR-INSTALLED). COORDINATE IN FIELD FOR EXACT LOCATION AND DIMENSION AS REQUIRED.
10. PROVIDE CONDUIT(S) AND WIRING PER POWER RISER. REFER TO DRAWING E-3 FOR ADDITIONAL INFORMATION.
11. MOUNT THE C/T CABINET (IF UTILITY COMPARTMENT NOT BUILT-IN SWITCHBOARD) AND METER (IF METER SOCKET NOT BUILT-IN SWITCHBOARD) ON METAL SUPPORT CHANNELS AND THE HEIGHT REQUIREMENTS PER UTILITY STANDARD/NEC.
12. RELOCATE EXISTING UNDERGROUND ELECTRICAL CONDUIT AND ASSOCIATED WIRING, SPLICE AND EXTEND CIRCUITRY (CONDUIT/WIRING) FROM EXISTING LOCATION TO NEW LOCATION AS SHOWN ON DRAWING AS REQUIRED. REFER TO DRAWING C-3 FOR ADDITIONAL INFORMATION.



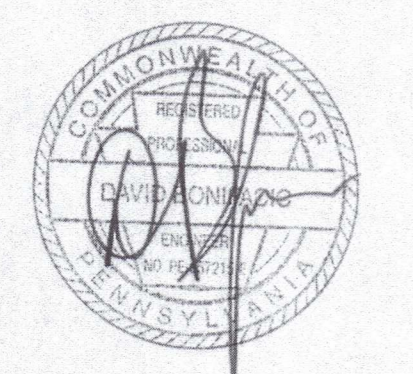
EVgo SERVICES, LLC
 11835 W OLYMPIC BLVD STE 800 E
 LOS ANGELES, CA 90064



Job Name:
**WAWA #0157
 NORTH WALES**

593 DEKALB PIKE, -EV
 NORTH WALES, PA 19454

SHEET DESCRIPTION:
**ELECTRICAL
 ENLARGED SITE PLAN**



Project #: P1773
 File:
 Drawn by: KC
 Date(s): 07/25/2022
 2022.07.25 - DD100 PRELIMINARY DESIGN
 2022.08.08 - ISSUED FOR PERMIT

