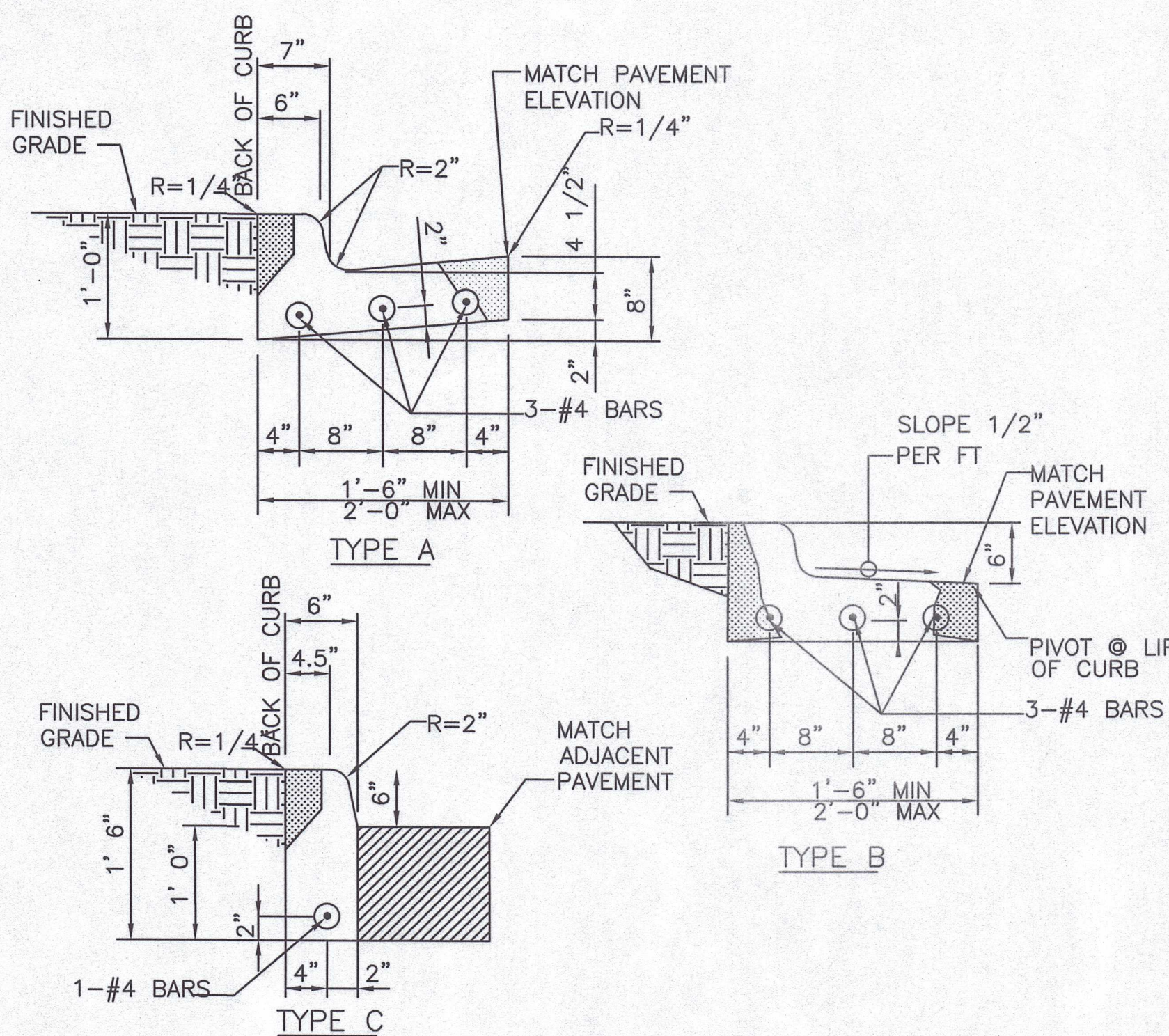
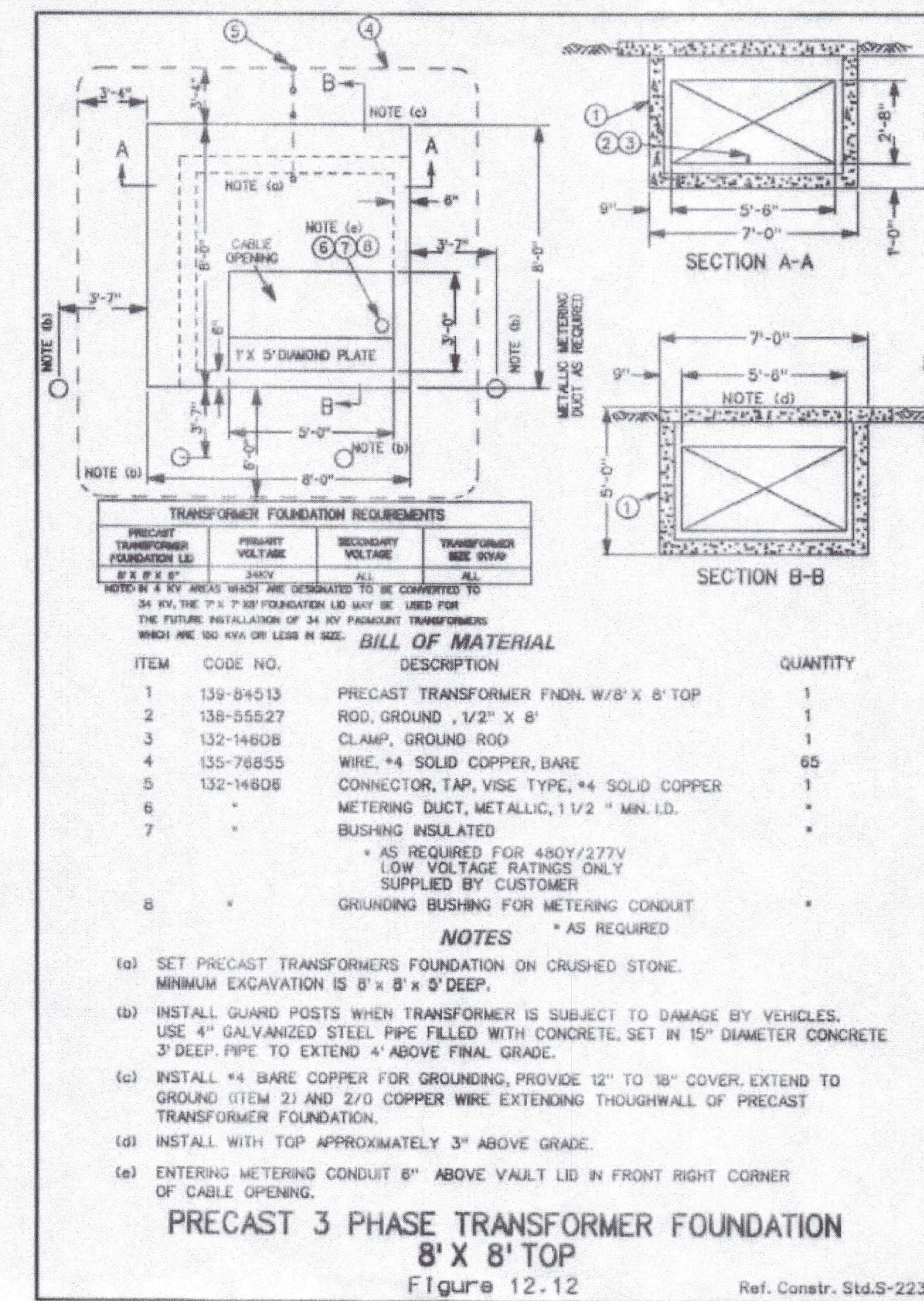


**A**  
D-3 NOT USED  
SCALE: N.T.S.



**NOTE**  
1. 1/2" PRE MOLDED EXPANSION JOINTS SHALL BE PLACED AT POINTS OF CURVATURE, CURB RETURNS, CURB INLETS, AND AT 250' CENTERS. CONTRACTION JOINTS SHALL BE 2" DEEP, 3/16" WIDE, AND PLACED AT 15' INTERVALS EQUALLY SPACED BETWEEN EXPANSION JOINTS.

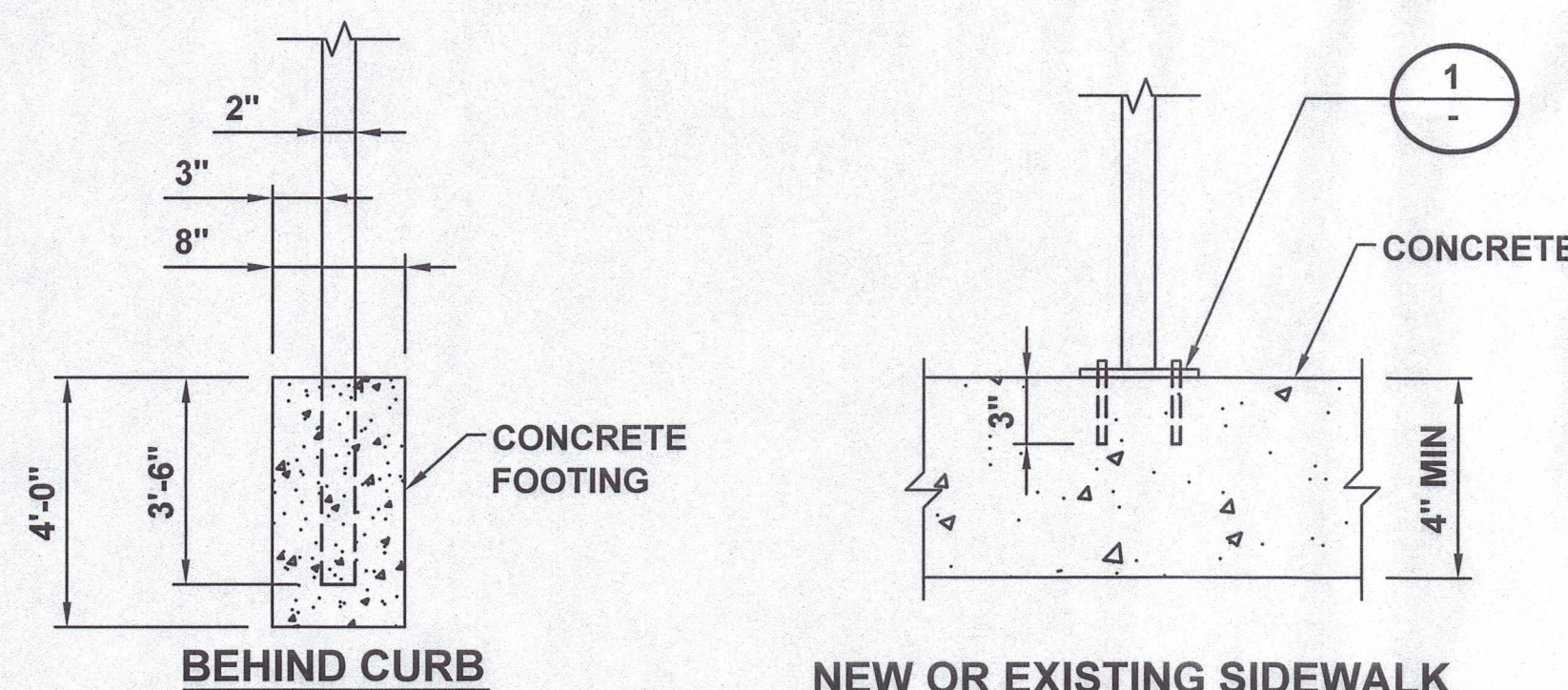
**B**  
D-3 CONCRETE CURB DETAIL  
SCALE: N.T.S.



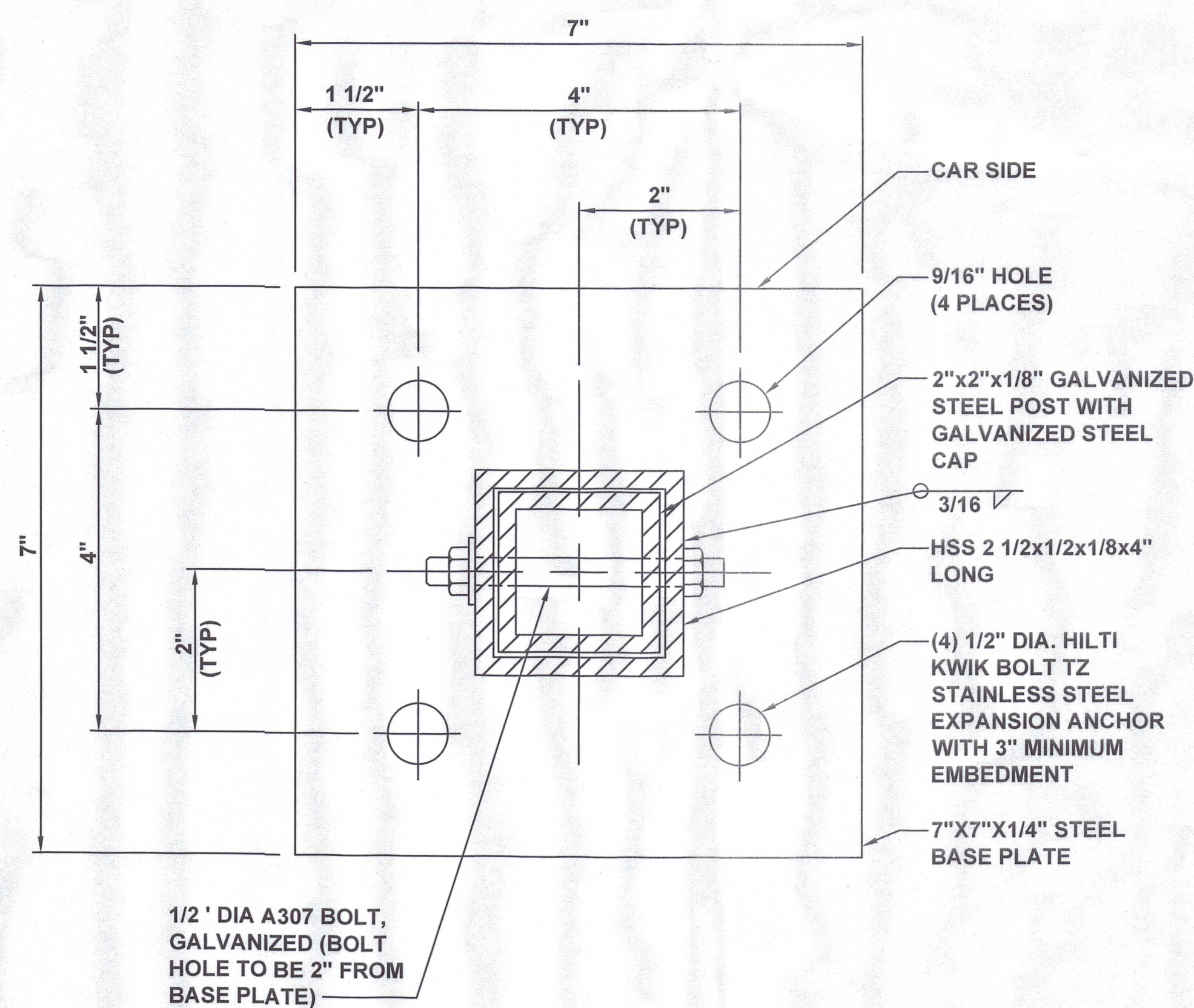
**C**  
D-3 TRANSFORMER FOUNDATION DETAIL  
SCALE: N.T.S.

- NOTES**
- CONTRACTOR TO SELECT CONCRETE FOOTING OR BOLT DOWN BASED ON EXISTING CONDITIONS. SEE SHEET C-3 FOR PLACEMENT.
  - BOTTOM OF LOWEST SIGN TO BE INSTALLED 66" ABOVE GRADE.
  - ADDITIONAL PARKING SIGNS TO BE INSTALLED 2" ABOVE TOP OF PREVIOUS SIGN.
  - SIGN, SIGN POST, AND SIGN FASTENERS TO BE PROVIDED BY CONTRACTOR. CONTRACTOR TO PROVIDE SIGN POST FASTENERS IF REQUIRED AND PAINTED TO MATCH.
  - IF PAINT FINISH IS DAMAGED DURING INSTALLATION, CONTRACTOR SHALL REPAINT AS REQUIRED.
  - CONTRACTOR SHALL COORDINATE WITH CITY WHEN SPECIAL JURISDICTIONAL/CITY REQUESTS ARE NECESSARY FOR ANY SIGN POST INSTALLATION, I.E. POST MATERIAL, PAINT COLORS, HARDWARE, ETC. CONTRACTOR IS RESPONSIBLE FOR ENSURING CITY APPROVES ALL MATERIALS PRIOR TO INSTALLATION.

- BOLT DOWN BASE PLATE NOTES**
- CONTRACTOR TO PROVIDE AND INSTALL SIGN POST, BASE PLATE ASSEMBLY, EXPANSION ANCHORS, AND 1/2" DIA A307 BOLT.
  - BASE PLATE ASSEMBLY TO BE HOT DIPPED GALVANIZED. PAINT TO MATCH SIGN POST.
  - PROVIDE 1/4" DIA. DRAIN HOLE TO PREVENT WATER FROM COLLECTING IN HSS.



**D**  
D-3 SIGN POST INSTALLATION DETAIL  
SCALE: N.T.S.



**E**  
D-3 BASE PLATE DETAIL  
-DETAIL 1

**E**  
D-3 NOT USED  
SCALE: N.T.S.